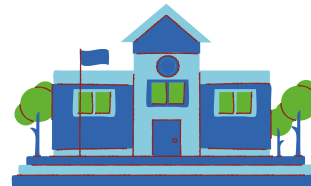


UNDERSTANDING THE DIFFERENCES

PUBLIC SCHOOL

Traditional and Charter

- Register with school
- State-certified teachers
- Fixed in-person schedule
- Publicly-funded Special Education (SPED) support for public-school learning environments
- Cohorts (small group settings that follow social distancing protocols)



Comprehensive Distance Learning (response to COVID-19 and falls under traditional public school learning)

- Remote
- Internet connectivity required
- Combination of live and recorded instruction
- Interactive (virtual) class sessions
- Assessments and grading



Online Public School

- Refer to your school district's website or Oregon Department of Education for more information
- Free tuition/federally funded
- Register with school
- Flexible schedule
- Self-directed learning
- Staff support from school



HOME SCHOOL

- www.douglasesd.k12.or.us/home-schooling/home
- Each district has a designated person who can log into Zengine to retrieve aggregate reports that are district specific.
- Parents or legal guardians are required to notify the local ESD for each child that will be homeschooled.
- New [online notification form](#) - Provides immediate confirmation and access to a portal for parents/guardians to upload test scores, change address and more. Other notification options include completing a [fillable form](#) or submitting a written letter. Formulario de notificación electrónico: kim.rencher@douglasesd.k12.or.us
- Students educated at the expense of private individuals
- Students with special needs may have access to publicly-funded supports
- Parents provide curriculum and content
- Flexible schedule
- Co-op options organized by parents
- State testing assessments required in third, fifth, eighth and tenth grades. Families arrange testing sessions and may be requested to submit scores to the local ESD. *Families new to homeschooling have an 18 month grace period before children must be assessed*
- Grading procedures determined by families. No high school credits earned or state-issued diploma awarded

