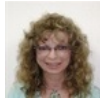


Take a look below for
Early Learning Hub Information!



Director's Corner

Vroom implementation throughout the South Central Early Learning Hub region is ongoing through various partners, programs and providers. Both of our tribal partners, the Klamath Tribes and the Cow Creek Band of Umpqua Tribe of Indians, are doing exceptional work in this area.

Congratulations to Cow Creek Band of Umpqua Tribe of Indians whose hard work and dedication have led to a showcase of their successes which are being shared with Vroom Sites across the nation!



powered by
vroom



Oregon Early Learning Division Vroom Case Study
Cow Creek Band of Umpqua Tribe of Indians



A Youth Development Specialist with the Tribe's Educational Division during a child reading group. The Tribe uses Vroom tips as a way to engage children during these groups.

The Cow Creek Band of Umpqua Tribe of Indians is a sovereign nation and one of more than 550 federally recognized Indian Tribal Governments. The Tribe consists of 1,750 Native Americans, with approximately 50 percent of them living in Oregon. 75 percent of the Tribe's native youth who are school-age qualify for Free and Reduced Lunch, which indicates their households have incomes below 185 percent of the Federal Poverty Level. Additionally, one-third of Cow Creek students are enrolled in so-called "priority" or "focus" schools. These are schools that are deemed underperforming through state rules and are targeted for intervention and additional support. By contrast, fewer than seven percent of all Oregon students are enrolled in priority or focus schools.

The Cow Creek Band of Umpqua Tribe of Indians rolled out Vroom as a program to reach new parents in December of 2015. Since then, the Vroom early-learning tools have been introduced to Tribal Members in a variety of ways, including in Round-Circle Reading Groups, Ready for Kindergarten and Preschool preparedness classes, the Pediatric Book Giveaway Program in their two health clinics, within Tribal book kiosks, and at a number of cultural events.

Vroom is further promoted by Tribal managers in their Education, Cultural, Housing, and Family Services Departments. Since its introduction in 2015, the Vroom early-learning tools have been shared with more than 400 Cow Creek Tribal families and have extended further with representation at quarterly Government to Government meetings that take place among Oregon's nine recognized Tribes. Vroom has been well received by these families and Tribal early childhood specialists. As K'Ehleyr McNulty, Youth Development Specialist with the Tribe's Educational Division recounted: "During our Round Circle Reading Groups, we always play a Vroom game at the end for the last 5-10 minutes. This has made a wonderful impact on the parents and children in attendance and, I think, has contributed to their regular attendance of the reading group as a whole. The kids love these activities so much, that sometimes we move the game to the beginning of class because they are so excited to get to play with their parents; this helps them better focus during reading time."

Questions? Contact Oregon Vroom Coordinator

[Ari Wubbold](#)

(503) 381-02046

[Oregon Early Learning Vroom Website](#)

Regional Collaboration

Our Regional Governance Council would like to have a South Central Early Learning Hub Facebook group for our committees to post questions, suggestions, and ideas. To join, [click here](#) or there ----->



Regional Data

2017-2019 Work Plan Summary ([English](#))

2017-2019 Work Plan Summary ([Spanish](#))

[View the EL Hub Data Presentation by Epidemiologist Anna Menon](#)

- [PowerPoint Presentation](#)
- [Priority Populations](#)

Kindergarten Assessment

[Learn more about the Kindergarten Assessment](#)

[2017-18 Preliminary Kindergarten Assessment Results](#) provided by the Early Learning Division

Children's First for Oregon

[2017 Oregon County Databook](#)

Did you know?

66% of children who identify with a minority population in our region score below average on early literacy, compared to 55% of children who identify as white.

CHILDREN WHO IDENTIFY WITH A MINORITY POPULATION HAVE 20% INCREASED RISK FOR SCORING BELOW AVERAGE IN EARLY LITERACY.



Find out more about Early Learning Hubs across the state with Oregon Hubdates:

- [March Hubdate](#) - This month's Hubdate includes Oregon Health Plan news, VROOM update, and many upcoming events!



Check out the *all new* [Vroom app](#) (Android or IOS) and [Website](#)! There are some exciting changes, new features and even more activities to do with children ages 0-5!



Stay Connected to the South Central Early Learning Hub!

For up-to-date information from South Central Early Learning Hub and other partner activities for parents and providers, don't forget to like and share our page!



Quick Links

- Douglas County Resource Directory
 - [English \(PDF\)](#)
 - [Spanish \(PDF\)](#)
- [Daily Vroom](#)
- [Text4Baby](#)
- [Let's Play!](#)
- [MD 4Kids](#)
- [Take Root](#)
- [SPARK Oregon's Quality Rating](#)
- [Brain Building Oregon](#)
- [211](#), Text 898211 or [email](#) for child care referrals
- [Klamath Co. Library](#)
- [Lake Co. Library](#)
- [Child Development - ASQ](#)
- [Kindergarten Readiness](#)
- [Zero to Three](#)
- [South Central Early Learning Hub](#)
- [Douglas ESD](#)



Visit our website



Danielle Walker | SCELH | (541) 880-4655 | Danielle.walker@douglasesd.k12.or.us

STAY CONNECTED

